



Retail



Hospitality



Data
Terminals



Ticketing

a Better Solution
for your Business™

New standard for Impact Printer

SRP-275

SRP-350plus Highlights

- **Fast printing speed of up to 5.1 lines second (15% faster than the SRP-270)**
 - Optimized mechanical components and software to enable fast and stable printing
 - Logic seeking, bi-directional printing technology allows higher speed than previous models with much less noise
- **Drop in and print paper loading**
 - Lift the lid, drop in the roll, and close the lid and print. Nothing could be easier
 - No more feeding rolls through slots or rollers
- **Built-in power supply**
- **Long lasting Auto-cutter up to 1.5 million cuts with easy paper-jam removal**
- **Trustworthy reliability (1.8 million lines MCBF)**
- **Supports Multiple Paper Widths (57.5 ± 0.5mm, 69.5 ± 0.5mm, 76 ± 0.5mm)**
- **Customer oriented software tools provided**
 - Logo/ Firmware download
 - Virtual Memory Switch Manager (VMSM)
- **Two different models**
 - SRP-275plusC (with auto-cutter)
 - SRP-275plusA (without auto-cutter)

BIXOLON®

SAMSUNG mini printers

SRP-275 New standard for Impact Printer

The BIXOLON SRP-275 is an enhanced, more powerful successor to BIXOLON's best-selling SRP-270 Series of receipt printers. The BIXOLON SRP-275 receipt printer is compact, reliable and fast, and offers all of the easy-to-use features important to retail, restaurant, and hospitality environments.



SRP-275A
(Without Auto-Cutter)

SRP-275C
(With Auto-Cutter)

MAIN FEATURES WITH SPECIFICATIONS

Fastest and quietest printing

The SRP-275 is optimized for high-speed so customer receipts allowing kitchen orders print faster than ever. More than 5.3 lines per second and an integrated graphics memory produce receipts in shortest time without delaying customers or guests.

Easy Paper Loading with Paper Width Guide

For maximum efficiency, the SRP-275 offers drop-in paper loading and the users can easily change the paper with one-hand. At the same time paper width guide allows you to use 57.5 ± 0.5mm, 69.5 ± 0.5mm, or 76 ± 0.5mm paper rolls for more flexibility and greater cost savings.



Easy Paper Loading



Variable Paper Width

Built-in Power Supply

The 220V AD adapter is elegantly integrated into the compact printer housing. Consequently, messing around with cables is avoided which is ideal at space-limited POS terminals or highly frequented cash desks.



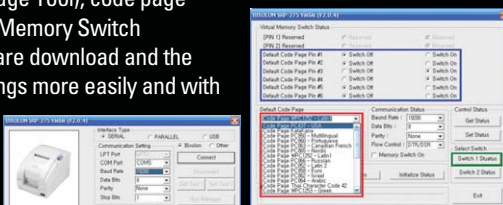
Built-in Power Supply

Trustworthy Reliability

With an average performance of 18 million rows without failure, this printer gives you all reliability you need for long-term use and the auto-cutter for the SRP-275 is also guaranteed up to 1.5 million cuts with easy paper-jam removal.

Customer oriented Software Tools

The customer oriented utilities enable the users to directly access logo download (NV Image Tool), code page selection (Virtual Memory Switch Manager), Firmware download and the other printer settings more easily and with no hardware changes.



PRINT

- PRINTING METHOD : 9 Pin Serial Dot Matrix
- PRINTING SPEED : 127mm/sec (5ips)
- RESOLUTION : Horizontal Resolution : 80 dpi / Vertical Resolution : 144 dpi
- CHARACTER SIZE (W X H dots) : Font A : 9 X 9, Font B : 7 X 9
Korean : 16 X 16, Chinese : 16 X 16
- CHARACTERS PER LINE : Font A : 33, Font B : 40 / Korean: 20, Chinese : 20
- CHARACTER SET : Alphanumeric Character : 95
Extended Character : 128 X 27 pages
International Character : 48

PAPER

- WIDTH : 57.5 ± 0.5mm, 69.5 ± 0.5mm, 76 ± 0.5mm
- PAPER ROLL DIAMETER : Max Ø 83.0mm
- SUPPLY METHOD : Easy Paper Loading

RELIABILITY

- PRINTER UNIT : 18,000,000 Lines
- TPH : 300 Million dots/wire
- AUTO CUTTER : 1,500,000 cuts

INTERFACE : RS-232C, IEEE1284, USB, Ethernet, Bluetooth

RECEIVE BUFFER : 8 Kbytes

NV IMAGE MEMORY : 256 Kbytes

EMULATION : ESC / POS

DRIVER : Win 95 / 98 / ME / 2000 / NT / XP / 2003 server / VISTA, OPOS

SENSOR : Paper Near End Sensor, Paper End Sensor,
Wall Mounting Paper Near End Sensor, Rear Cover Open Sensor

DRAWER PORT : 2 Ports

POWER SUPPLY (SMPS) : AC 100~240V / DC 24V, 1.5A

DIMENSIONS : 160 X 239 X 157 (W X L X H mm)

OPERATING TEMPERATURE : 0 ~ 45°C

OPTION

- WALL MOUNT (RWM-350)
- SPLASH COVER (RSC-275)